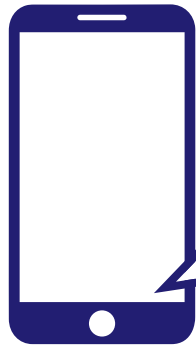


ISWAN Insights: Spotlight on Q2 2023

1st April – 30th June 2023



1,295 new calls and messages to ISWAN's helplines
(i.e. the first contact in a new case)
▲ **6%** compared to last quarter

2,443 
seafarers and family members assisted by ISWAN
▼ **18%** compared to last quarter

Key trend



▲ **37%** contacts related to mental health since last quarter across all ISWAN helplines

As well as *family or relationship issues, abuse/bullying/harassment/discrimination, and repatriation issues*, other themes in mental health cases included:



Isolation and homesickness



Work-related stress



Anxiety about physical health issues



Substance abuse issues

Trends by helpline



▲ **15%** contacts related to abuse, bullying, harassment and discrimination since last quarter



▲ **31%** information requests since last quarter